

Le Seve en quelques chiffres...



INDICATEURS

SERVICE DES ESPACES VERTS ET DE L'ENVIRONNEMENT VILLE DE NANTES

Seve
www.jardins.nantes.fr

 **Nantes**

Région, Département, Commune

Région	Pays de Loire
Surface région	32000 km2
Département	Loire Atlantique
Surface département	6980 km2
Commune	Nantes
Adresse	2 rue de l'Hôtel de Ville
CP	44094 cedex 1
Tel	02 40 41 90 00
Télécopie	02 40 41 92 39
Maire	M. Jean-Marc Ayrault
Adjoint Développement durable, environnement, Agenda 21, biodiversité	Ronan Dantec
Adjointe Parcs et jardins, espaces verts.	Catherine Touchefeu
Conseillère déléguée au jardins familiaux	Florence Février
Nombre d'habitants	282 853
Surface territoire commune	6523 ha
Surface espaces boisés classés	345 ha soit 4.7% de la surf de la commune
Pos 93	
Zones non constructibles	867 ha
Densité urbaine (nombre d'habitants au km2)	4336
Budget 2008	438 400 000 €
Personnel	4644 agents



INDICATEURS

SERVICE DES ESPACES VERTS ET DE L'ENVIRONNEMENT VILLE DE NANTES

Service des Espaces Verts et de l'Environnement

■ Personnel

Responsable Jacques Soignon
Nombre total d'agents (postes) 458

Services 2009

Cellule de gestion	18
Subdi O	70
Subdi N	90
Subdi E, C,S	107
Botanique	35
Productions horticoles	33
Maintenance	26
Bureau Etudes	8
Relation au public	56
Prévention sécurité hygiène	15



■ Finances

Budget fonctionnement	20 242 000 €
Dont budget personnel	16 668 000 €
Budget investissement	2 695 000 €
Budget investissement en % du budget ville	3.51



INDICATEURS

SERVICE DES ESPACES VERTS ET DE L'ENVIRONNEMENT VILLE DE NANTES

Service des Espaces Verts et de l'Environnement

■ Espaces verts

Surface totale entretenue par le Seve	1030 ha
Nombre de points d'intervention	1400
Surface ev / habitant	36 m2
95 parcs et squares	218 ha

■ Arbres d'alignement

Arbres d'alignement	20000
Essences utilisées en alignement	185
Gestion manuelle	2236 u
Gestion mécanique	2428 u
Plantation Arbres d'alignement 5 dernières années	1500 sur 3700 au total
Plantation Arbustes d'ornement	35000 / an

■ Jardins familiaux

Sites	22
Parcelles	907
Surface	12 ha

■ Espaces naturels

Surface espaces naturels	213 ha
Promenades	46 km

■ Jeux d'enfants

Nombre de jeux	509
Nombre d'aires de jeux	177
Nombre de corbeilles	1000
Nombre de bancs	1996
Nombre d'aires de proximité	957



INDICATEURS

SERVICE DES ESPACES VERTS ET DE L'ENVIRONNEMENT VILLE DE NANTES

Service des Espaces Verts et de l'Environnement

■ Production végétale

Surface des serres de production	3700 m2 + tunnels 3500 m2
Production florale dans le cycle annuel (estivales)	247 000 pour 417 désignations
Production de décoration printanière (bisannuelles)	440 000 pour 229 désignations
Chrysanthèmes à massifs	9000
Chrysanthèmes colonnes et cascades	440
Jardinières posées en ville	473

■ Collections végétales

Cactées et succulentes	3800
Plantes épiphytes	2000
Rosiers	1580
Flore armoricaine	1400
Plantes tropicales utilitaires	1000
Plantes vivaces	900
Camellia	600
Iris	667
Magnolia	550
Houx	107
Chênes	70
Cactées et succulentes	3800
Séminothèques flore armoricaine	1900 accessions
Bibliothèque	2164 livres
Fruits en platre	269
Herbiers	2500
Photothèques	15000



INDICATEURS

SERVICE DES ESPACES VERTS ET DE L'ENVIRONNEMENT VILLE DE NANTES

Service des Espaces Verts et de l'Environnement

■ Palmarès

- 1969 Première fleur
- 1970 Deuxième fleur
- 1971 Troisième fleur classement hors concours
- 1977 Campings fleuris Premier prix
- 1979 Création de la Quatrième fleur par le Comité de Fleurissement Distinction attribuée à Nantes
- 1980 Challenge Européen des Villes Fleuries
- 1988 1991 1994 Grand Prix de Fleurissement
- 1995 Grand Prix de l'Arbre
- 1996 Prix Territoria des Collectivités attribué à Nantes pour le SIFU
- 1997 2000 2003 2006 **2009 Grand Prix de Fleurissement**
- 2003 Prix Eurocités



INDICATEURS

SERVICE DES ESPACES VERTS ET DE L'ENVIRONNEMENT VILLE DE NANTES

■ **Manifestations**

« **Biennale de la rose parfumée** »

Tous les deux ans en mai



« **Floralies internationales** »

Principale exposition florale en France

Tous les 5 ans (2004 – 2009....)



« **La Folie des plantes** »

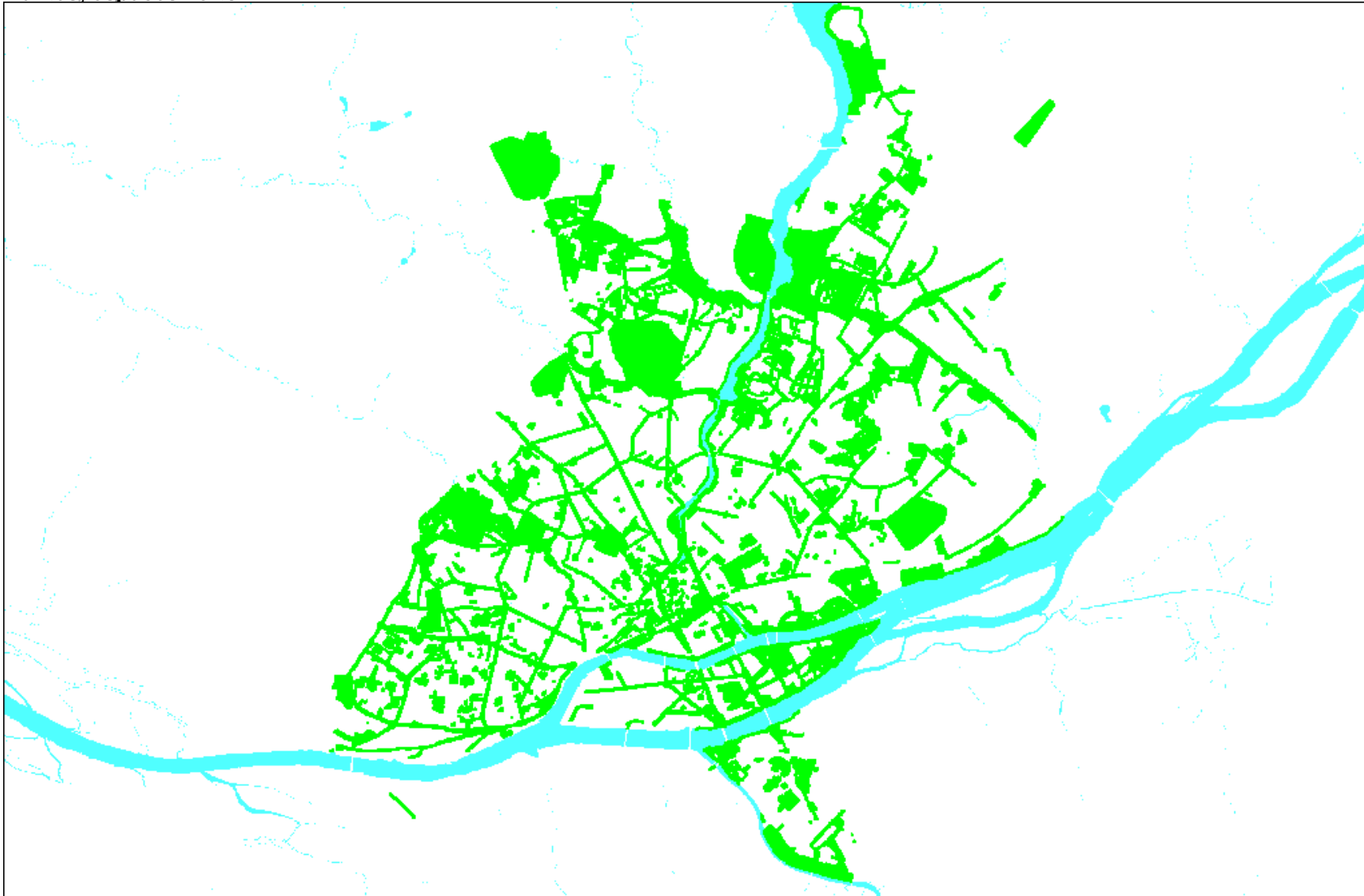
Chaque année au début du mois de septembre



INDICATEURS

SERVICE DES ESPACES VERTS ET DE L'ENVIRONNEMENT VILLE DE NANTES

Nantes, espaces verts



Nantes quality of life - The last best place in Europe ? by Grant Rosenberg Times Magazin Sunday, August 22, 2004

Fact No. 1: France is famous for enjoying the best quality of life on the Continent. Fact No. 2: The French seem to think that their country's best place to live is not a tourist magnet like Paris, Nice or Toulouse, but lesser-known Nantes, a city of 550,000 close to the Atlantic coast. In 2003, the weekly L'Express voted Nantes the Greenest City, and the weekly Le Point named it Best Place to Live in both 2003 and 2004. Put it all together and the conclusion becomes inescapable: Nantes must be the most livable city in all of Europe.

Socialist Mayor Jean-Marc Ayrault, 54, whose environment- and family-friendly policies have led to much of the acclaim, says his ambition is to make his town "a city that counts in Europe." Wherever you go in Nantes, you can see what Ayrault and his city planners have achieved over the course of his 15-year tenure. Recycling and conservation programs have resulted in 1,000 hectares of greenery and 95 parks and squares around the Nantes area; 70% of all waste is recycled. There are 500 km of bicycling and walking paths, which often hug the banks of the Erdre River. Even the city center feels light and airy, with wide sidewalks and streets, and a skateboarding park near the heart of town. But Nantes' pride and joy is its transportation system, which includes a tramway network and a fleet of 155 buses that run on natural gas. It's not hard to see why Emilie and Sebastien Loizeau picked this place when they moved back to France in 2003 after five years in Dublin. The couple recently opened a brasserie on a quiet street a few steps away from the city center, and are doing brisk business. "We wanted an affordable city that wasn't too big, but had lots of culture, yet a countryside spirit as well," says Emilie, 27, as she serves coffee to one of the regulars. "I like the relaxed pace of this city ... Plus, you can go everywhere on the tram."

The Loizeaus are part of a larger migration into Nantes. Between 1990 and 1999, the city saw a 10.3% jump in population — the largest increase in any French city during that period — to become the sixth largest in the country. Some of these new residents have been Parisians fleeing the expensive capital (just two hours away by TGV train) in search of good jobs, affordable housing and a safe environment. "I think that generally speaking, there's a demand today for a certain quality of life," says Ayrault, a tall, gray-haired man with a formal demeanor. "With more people choosing to live in cities, there's a need for an environment that is pleasant, that balances economic activity, work, well-organized public services and daily life." He's made it his business to achieve that balance in Nantes. In addition to the physical transformation of the city, the mayor has earned widespread praise for innovative social programs, such as guaranteed day care for all parents who need it, at a cost scaled to their income.

So far, at least, the population boom has not affected Nantes' cozy small-town feel, but it is having some impact on real-estate prices. Realtor Antoine Tuset says prices have been rising 10-15% a year. "When I began working here in 1996, we had a lot of properties and our worry was finding buyers," he says. "Now, it's the opposite, trying to find good locations to meet the heavy demand." Tuset says many of his clients are "empty nesters who've already raised their children in homes on the edge of Nantes, and now are moving to the city center, into modest apartments where everything is all right downstairs." But he mostly gets young couples moving to Nantes for jobs and a more relaxed lifestyle than they find in Paris.

Jobs aren't hard to come by. Since the early 1990s, Nantes and its neighboring port of St. Nazaire — the two have an economic-political partnership called the Métropole Atlantique — have attracted major industry to the area; companies like IBM, Airbus, Cap Gemini, Oracle and La Poste have all set up regional offices. The area is also becoming a high-tech hub, with dozens of biotech firms basing their headquarters here. The result: out of France's 100 departments, Loire-Atlantique, which encompasses Nantes and St. Nazaire, has added 100,000 jobs over the past decade, the most outside the Île de France region, which includes Paris.

For Ayrault, the influx of investors and settlers is a vindication. He's now pursuing more ambitious projects to bring not just new housing and business, but also community sports facilities and still more green spaces to relatively underdeveloped areas of the city. For this mayor, who is also a deputy and the Socialist Party leader in the National Assembly, the ideal city is one where "the people feel they have a stake in it, where the city is in their skin, where they choose to be a part of a community. This makes it easier to legislate and easier to surmount problems."

The mayor's obvious pride has rubbed off on his fellow citizens, even those who feel compelled to mar the city's beauty. In the alley next to a nice café near the Place du Commerce, scrawled in white spray paint across a brick wall is the distinctly unhip slogan: STAY CLEAN AND POLITE. Finally, graffiti even city planners can agree with.